

# MGS Modern Green Structures & Architecture

An NBM Media Group Publication

+ Interior Design



**Doors & Windows**

**Sanitaryware**

**Lighting**



## Healing Through Light & Colour

**Studio An-V-Thot Architects** design a hospital block that stands as a monolithic structure of a single cuboidal volume

This 100-bed healthcare facility spread across 7 floors stands tall and strong underneath a cloak of simplicity. A multilevel parking with yellow structural members and peripheral vehicular access in patterned flooring sets the stage for the hospital block that stands as a monolithic structure of a single cuboidal volume.

The facade, in a variety of shades of greys, has accentuating horizontal lines that add depth of character to the building. The skin is designed with varying sunlight intake capacities, depicting progressive zoning from the ground upwards as per

the changing functional requirements. The materials used are a combination of exposed concrete, dark grey stacked slate stone, aluminium composite panels, and a uniform series of glass panels.

Adding a statement to this structure is a combination of small square punctures guiding light routes placed in a random pattern and running across the dark grey layer of the complete front side facade. This simplicity of randomness breaks the monotony of the grey distributions, while intervals of wrought iron grillwork on the boundary wall add to the character.





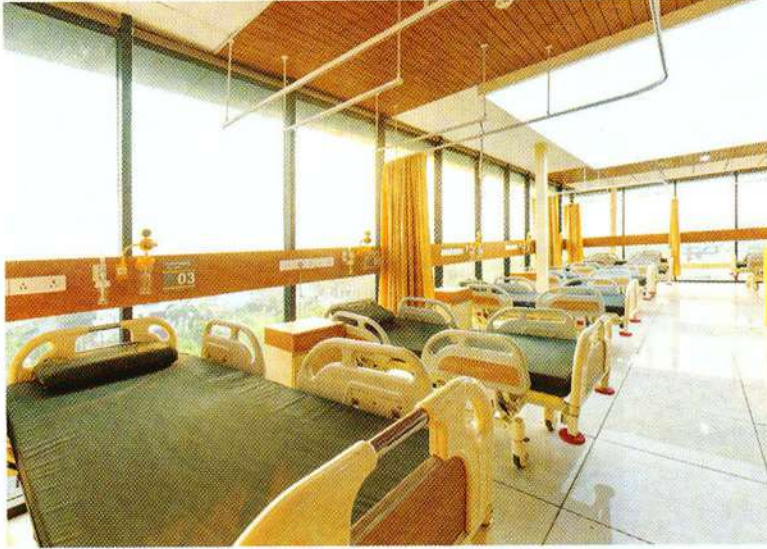


While questions on physical identity, architectural presence and personality in context with locality routed the facade development, progressive zoning, backend and forefront movement etc, the desire to heal through air, light, colour and nature guided the interior design development

**Ar. Ankita Sweety  
& Ar. Pratyosh  
Chandan**







In the interiors, segregation of spaces is done keeping in mind the progressive zoning as well as departmental inter-relation, through guided and uncluttered circulation. The variety of materials that are in play with the interiors are kept in sync with the overall composition, and include a combination of Golden Emperador Italian Stone, Off-white & Yellow Corian, Laminates, Clear & Lacquered Glass, a combination of Grid & Gypsum ceiling, Stretched Fabric Ceiling, and colourful paintings to cheer up the environment.

A central open-to-sky courtyard on the 2nd floor has lots of greenery and pergolas made of colourful hanging glass panels and MS cross-sections that create a light well of colourful shadows within the core of the hospital. An art room adjacent to the courtyard invites patients to scribble with colours on a canvas. The concept is to heal through light and colours.

## Fact File

Project Name: Yashoda Super Speciality Hospital & Cancer Institute

Location: Ghaziabad, UP

Built-up area: 50,000 sqft.

Contractor: Structural and Civil: Yashoda Group of Hospitals

Architects & Interior Designers: Ankita Sweety, Pratyosh Chandan

Structure Consultant: Space Designers

MEP Consultant: CESPL

Year of Completion: Jan 2019

Cost of project: ₹2000/sqft

Photo Credit: Aadit Basu, Places & Spaces

## Material Palette

Flooring: Tarkett, Square Foot, Kajaria, Stonex

False Ceiling: Armstrong, Gypsum Ceiling

Finishes: Greenlam, Asian Paints, Luxture, DuPont

Light Fixtures & AC: Philips, Usha, Trane

Washroom Fixtures: Jaquar, Saint-Gobain

Facade: Alu-Decor, Natural Slate Stone, Luxture

Concrete Finishes 

